

# Technical data sheet

## Product features



### Electric fryer 13l on cabinet

<b>Model</b>	<b>SAP Code</b>	00019407
--------------	-----------------	----------



- Basin volume [l]: 13
- Drain type: Trough the cabinet
- Safety drain: Yes
- Maximum device temperature [°C]: 190
- Minimum device temperature [°C]: 50
- Material: AISI 304 top plate and cladding
- Heating location: Inside the tank
- Number of baskets: 1
- Basket size [mm]: 215 x 300 x 120

<b>SAP Code</b>	00019407	<b>Loading</b>	400 V / 3N - 50 Hz
<b>Net Width [mm]</b>	400	<b>Basin volume [l]</b>	13
<b>Net Depth [mm]</b>	730	<b>Number of basins</b>	1
<b>Net Height [mm]</b>	900	<b>Number of baskets</b>	1
<b>Net Weight [kg]</b>	46.00	<b>Basket size [mm]</b>	215 x 300 x 120
<b>Power electric [kW]</b>	9.900	<b>Ratio power/volume [kW/l]</b>	0.76

# Technical data sheet

Technical drawing

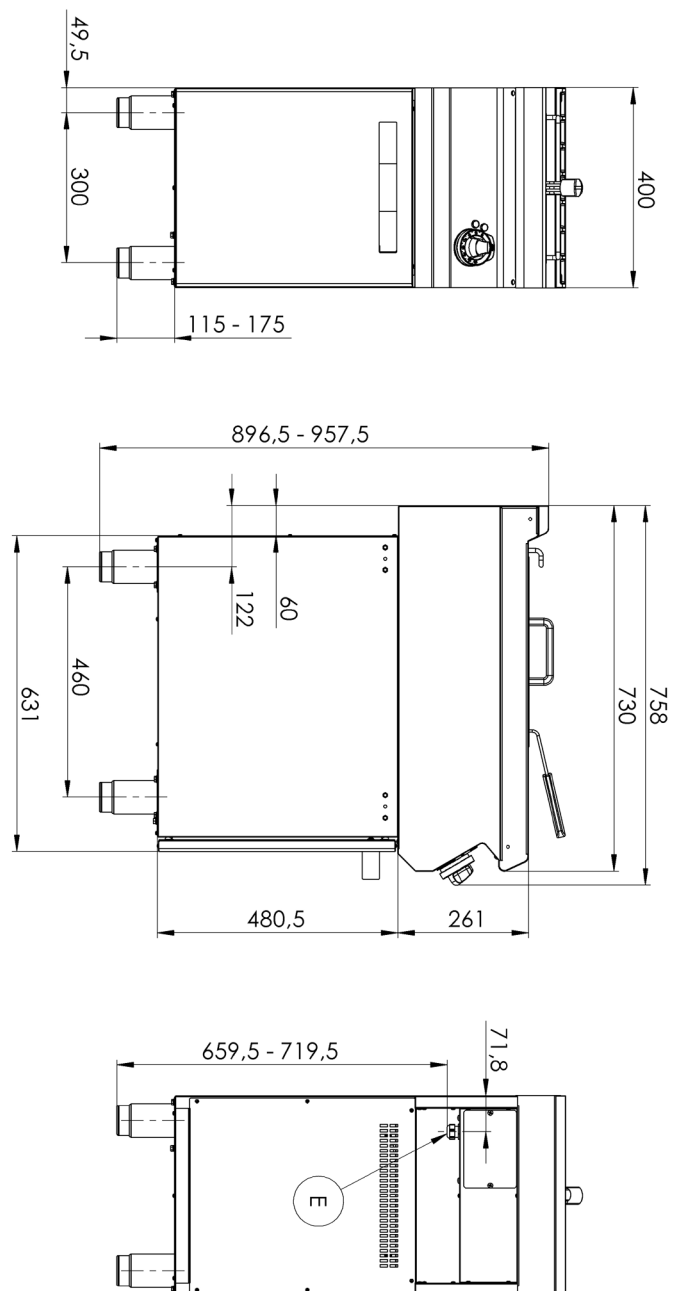


## Electric fryer 13l on cabinet

Model

SAP Code

00019407



# Technical data sheet

Technical parameters



## Electric fryer 13l on cabinet

**Model**

**SAP Code**

00019407

**1. SAP Code:**

00019407

**2. Net Width [mm]:**

400

**3. Net Depth [mm]:**

730

**4. Net Height [mm]:**

900

**5. Net Weight [kg]:**

46.00

**6. Gross Width [mm]:**

440

**7. Gross depth [mm]:**

800

**8. Gross Height [mm]:**

1065

**9. Gross Weight [kg]:**

52.00

**10. Device type:**

Electric unit

**11. Construction type of device:**

With substructure

**12. Power electric [kW]:**

9.900

**13. Loading:**

400 V / 3N - 50 Hz

**14. Protection of controls:**

IPX4

**15. Exterior color of the device:**

Stainless steel

**16. Material:**

AISI 304 top plate and cladding

**17. Indicators:**

operation and warm-up

**18. Worktop type:**

Molded - comfortable cleaning maintenance

**19. Worktop material:**

AISI 304

**20. Worktop Thickness [mm]:**

1.50

**21. Device heating type:**

Direct

**22. Standard equipment for device:**

lid and basket

**23. Basin volume [l]:**

13

**24. Basin dimensions [mm x mm x mm]:**

265 x 346 x 200

**25. Maximum device temperature [°C]:**

190

**26. Minimum device temperature [°C]:**

50

**27. Safety thermostat:**

Yes

**28. Heating element material:**

AISI 304

# Technical data sheet

Technical parameters



## Electric fryer 13l on cabinet

Model	SAP Code	00019407
-------	----------	----------

**29. Number of baskets:**

1

**33. Ratio power/volume [kW/l]:**

0.76

**30. Number of basins:**

1

**34. Drain type:**

Trough the cabinet

**31. Basket size [mm]:**

215 x 300 x 120

**35. Safety drain:**

Yes

**32. Basin material:**

AISI 304 - High quality stainless steel

**36. Heating location:**

Inside the tank